

WATERMARK AN IMAGE with PHOTOSHOP CS (will not work with Elements...sorry)



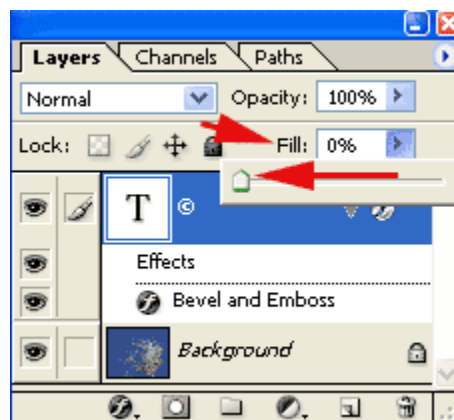
final result

1. Open your image in Photoshop CS. Prepare the image as needed.
2. Click on the Text Tool. If you know which font and size you'd like, you can choose it now but since you can change it at any time, it's not important to set these options right away. Color will not be seen so it is not important. Now type what you'd like your watermark to be. In this tutorial, I'm using a copyright symbol and my name. Position the text where you'd like on your image.

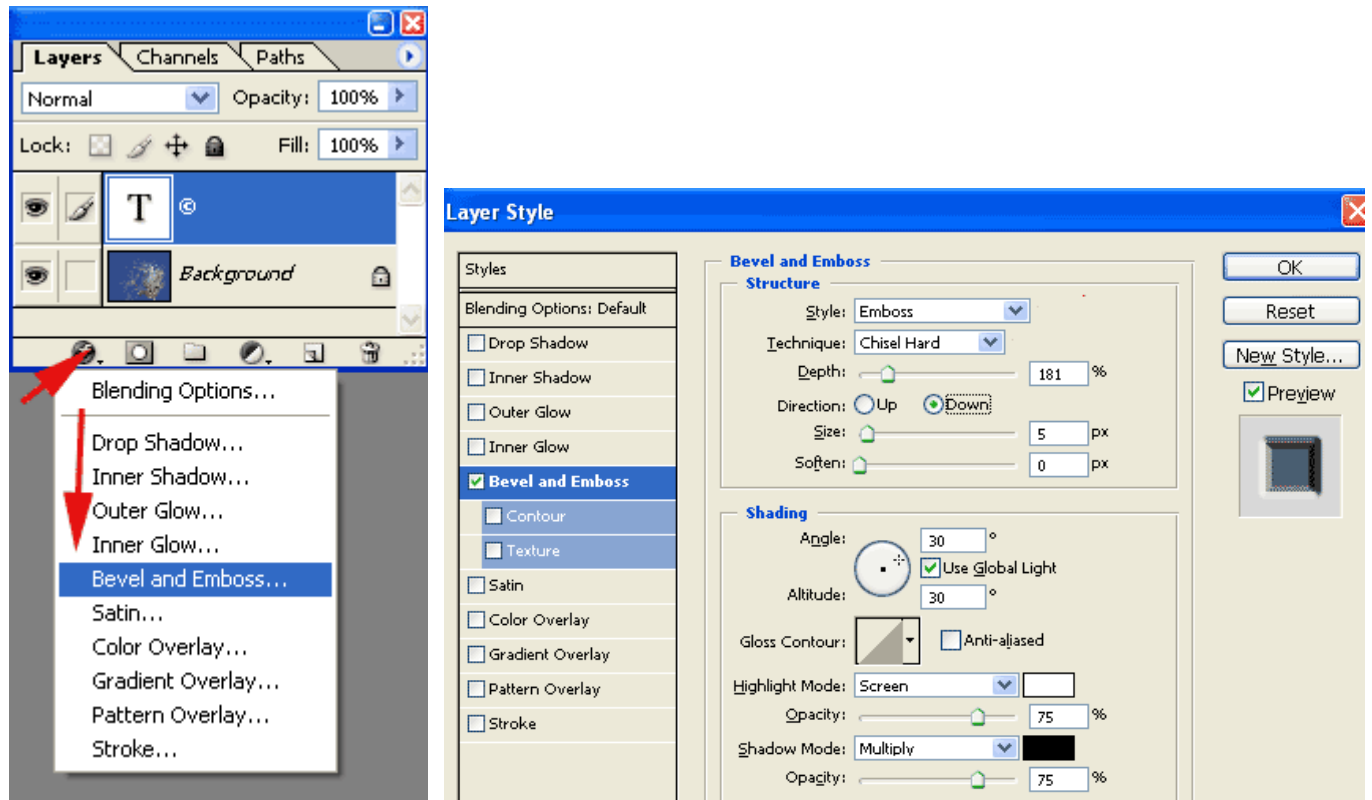
If your text needs to be resized, I suggest using "Free Transform". Just press control/command and "T" and then drag out your type as much as you like. You can also distort it you want. It's much faster.



3. Once your text is as you would like it, look at your Layers Palette. Lower the "Fill" to 0 (zero). The Fill relates to pixels in your document so when you lower it to zero, **your text will disappear**.



4. **Now the magic!** Click on the “f” at the bottom of the Layers Palette and choose “Bevel and Emboss”. Your text should reappear. With your eye on your text, make adjustments to the Bevel and Emboss sliders until you get desired results. I find that lowering the opacity of the Highlight and Shadow options work well.



5. As a final step, you can reposition your text. I like to use the Transform Tool (Ctrl/Cmd + T) because it offers more options for rotation, sizing, etc.



final result

Finally.....save your watermark! You could save just the TEXT LAYER and drag this layer onto any other document. You could also create a Custom Shape. Either way, use “Free Transform” to make it whatever size you need. Because Text and Custom Shapes are Vectors, they can be resized as large or small as you need without any degradation.